

Labrador Tea



Other names: *Rhododendron groenlandicum* (Oeder) Kron & Judd, gots'agoò, nagoth, gots'ago, maskêkopakwa, thé du Labrador

Ericaceae - Heath Family

Quick ID

Height: 1m

Vegetation Type: shrub

Leaves: oblong linear, alternate, evergreen, edges rolled under, hairy underside (white first year, rust-coloured thereafter)

Flowers: white, 5 petals

Inflorescence: clustered

Stem: woody, hairy

Habitat: Full sun to part shade; Only lives in wetlands; e.g. mostly wooded areas especially with opened canopy, sunny cliffs & ledges, barren mossy and lichenous areas



Jan	Feb	Mar	Apr	May	Jun	Jul	Aug	Sep	Oct	Nov	Dec



Flowering

How often: Annually

When: June-July

- Perfect flowers
- Most flowers open at the same time



Labrador Tea



Other names: *Rhododendron groenlandicum* (Oeder) Kron & Judd, gots'agoò, nagoth, gots'ago, maskêkopakwa, thé du Labrador
Ericaceae - Heath Family

Seed Forecasting

When: July

What to look for:

- Green ovoid fruit turning brown as it ripens

Seed Collection

When: August-September

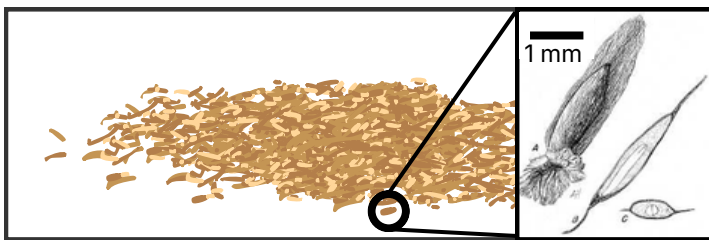
What to look for:

- Brown fruit starting to split open
- Seeds disperse quickly after fruit split open
- seeds are tiny brown wisps

Cleaning and Storage

Type: dry, dehiscent

- Let dry, lots of seeds will drop as it dries
- Shake out fruit
- Crush and sift to remove fruit parts a get remaining seed
- Sow that year as they don't germinate well after a year



Germination

- Non-dormant, but slow to germinate
- Low seed longevity (sow that year)
- Needs lots of sun and high moisture

Look-alike plants:



Northern Labrador tea (*Rhododendron tomentosum*)

Northern Labrador tea:

- Smaller plant
- Leaves narrower
- Wrinklier leaves



Pale bog laurel (*Kalmia polifolium*)

Pale bog laurel:

- Smaller plant
- Open pink flowers
- Opposite leaves



Lapland Rosebay (*Rhododendron lapponicum*)

Lapland rosebay:

- Smaller plant
- Wider leaves
- Pink flowers